



The Courtyard, Long Row, Newark, Notts NG24 1RW, ENGLAND

Telephone: +44 (0) 1636 610030 Fax : +44(0) 1636 610022

E-mail : [sales@gdmlindex.co.uk](mailto:sales@gdmlindex.co.uk) Website: [www.gdmlindex.co.uk](http://www.gdmlindex.co.uk)

## External Custody

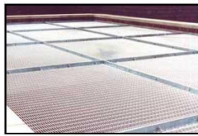




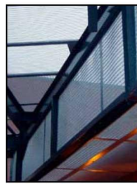
The Courtyard, Long Row, Newark, Notts NG24 1RW, ENGLAND

Telephone: +44 (0) 1636 610030 Fax : +44(0) 1636 610022

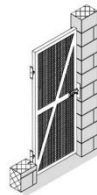
E-mail : [sales@gdmlindex.co.uk](mailto:sales@gdmlindex.co.uk) Website: [www.gdmlindex.co.uk](http://www.gdmlindex.co.uk)



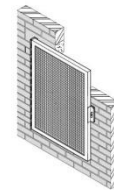
**CS0801 - Horizontal Security Grille**  
(Price on application)



**CS0802 - Vertical Security Grille**  
(Price on application)



**CS0803 - Kennel Gate**  
(Price on application)



**CS0804 - External Mesh Window Grille**  
(Price on application)



The Courtyard, Long Row, Newark, Notts NG24 1RW, ENGLAND

Telephone: +44 (0) 1636 610030 Fax : +44(0) 1636 610022

E-mail : [sales@gdmlindex.co.uk](mailto:sales@gdmlindex.co.uk) Website: [www.gdmlindex.co.uk](http://www.gdmlindex.co.uk)

## External Custody

### Contents

- CS0801 Horizontal Security Grille
- CS0802 Vertical Security Grille
- CS0803 Kennel Gate
- CS0804 External Mesh Window Grille



The Courtyard, Long Row, Newark, Notts NG24 1RW, ENGLAND  
Telephone: +44 (0) 1636 610030 Fax : +44(0) 1636 610022  
E-mail : [sales@gdmlindex.co.uk](mailto:sales@gdmlindex.co.uk) Website: [www.gdmlindex.co.uk](http://www.gdmlindex.co.uk)

## CS0801 - Horizontal Security Grille

[CS801]



A robust mesh grille fitted over the exercise yard to secure against escape and prevent the passage of contraband, for use in Police Stations.

### specification

- Constructed from individual panels fixed to a continuous perimeter angle, bolted around the exercise yard
- Each panel is fabricated from an angle frame of suitable size which is infilled with 4mm thick high tensile woven mesh giving 50mm x 9.5mm aperture size. All adjacent panels are bolted together and each panel is bolted to the perimeter angle
- Designed to provide a secure construction without the need for supporting beams, thus eliminating clambering holds
- The high tensile woven mesh resists cutting and de-linking whilst the continuous supporting angle minimises the possibility of the passage of contraband

### finish

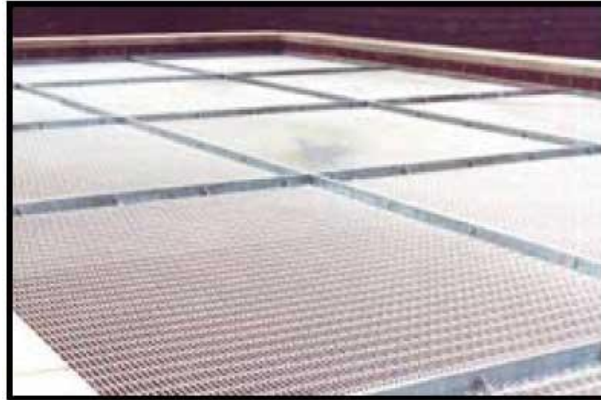
- Hot dip galvanised

### options

- Any size available up to a maximum span of 6300mm unsupported. Spans greater than 6300mm must be supported by a structural steel beam. All supporting steelwork to be supplied and fitted by others prior to the installation of the grille

# CS0801 - Horizontal Security Grille

[CS801]



## Typical Exercise Yard Grilles

Grille made up of individual grille units of handleable size, assembled in-situ on site.



Viewed on top of the Grille



High tensile woven mesh,

Viewed from underneath the Grille



The Courtyard, Long Row, Newark, Notts NG24 1RW, ENGLAND  
Telephone: +44 (0) 1636 610030 Fax : +44(0) 1636 610022  
E-mail : [sales@gdmlindex.co.uk](mailto:sales@gdmlindex.co.uk) Website: [www.gdmlindex.co.uk](http://www.gdmlindex.co.uk)

## CS0802 - Vertical Security Grille

[CS802]



A versatile mesh grille to the vehicle lock (van dock) areas, designed to secure against escape and prevent the passage of contraband also provides ventilation to the vehicular traffic, fitted either vertically or horizontally, for use in Police Stations, Magistrate and Crown Courts.

### specification

- Constructed from individual panels fixed to a continuous perimeter angle, bolted around the van dock area
- Each panel is fabricated from an angle frame of suitable size which is infilled with 4mm thick high tensile woven mesh giving 50mm x 9.5mm aperture size. All adjacent panels are bolted together and each panel is bolted to the perimeter angle
- Designed to provide a secure construction without the need for supporting beams, thus eliminating clambering holds
- The high tensile woven mesh resists cutting and de-linking whilst the continuous supporting angle minimises the possibility of the passage of contraband

### finish

- Hot dip galvanised

### options

- Any size available up to a maximum span of 6300mm unsupported. Spans greater than 6300mm must be supported by a structural steel beam. All supporting steelwork to be supplied and fitted by others prior to the installation of the grille.

# CS0802 - Vertical Security Grille

[CS802]



## Typical Van Dock Grilles

Grille made up of individual grille units of handleable size, assembled in-situ on site.

Overhead Grilles in conjunction with vertical units can be provided to totally enclose Van Dock area.



Grilles can be manufactured to follow contour of building.



Viewed on Grille from Inside Van Dock



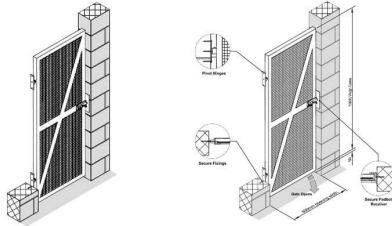
The Courtyard, Long Row, Newark, Notts NG24 1RW, ENGLAND

Telephone: +44 (0) 1636 610030 Fax : +44(0) 1636 610022

E-mail : [sales@gdmlindex.co.uk](mailto:sales@gdmlindex.co.uk) Website: [www.gdmlindex.co.uk](http://www.gdmlindex.co.uk)

## CS0803 - Kennel Gate

[CS0803]



A secure open mesh hinged single leaf gate with provision for padlock designed for use as a Kennel Gate in Police Stations.

### specification

- Constructed from 50 x 50 x 6 rolled steel angle frame infilled with 25 x 25 steel mesh with reinforcing bracing straps
- Gate is supplied as standard with one lockable padbolt, receiver angle and two pivot hinges
- Receiver angle and pivots are screw fixed to walls
- Padlock to be supplied by others

### finish

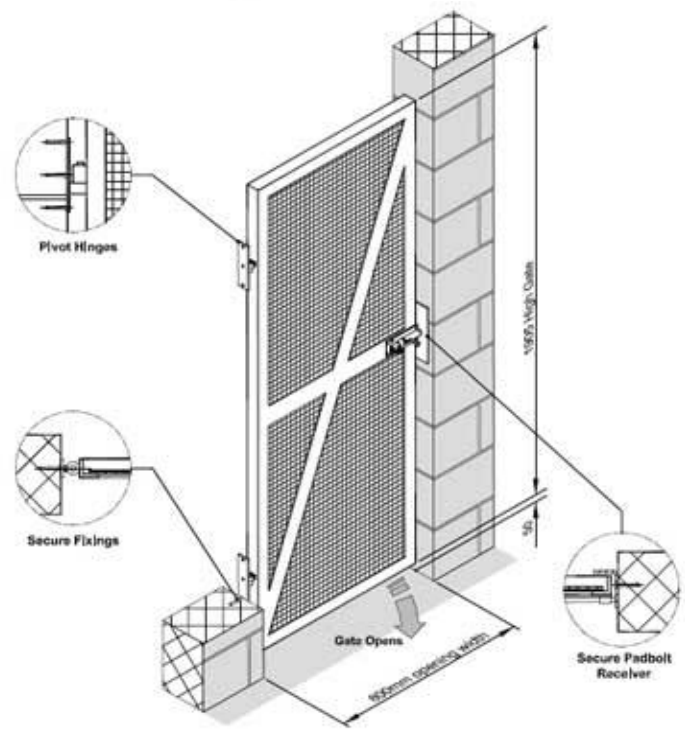
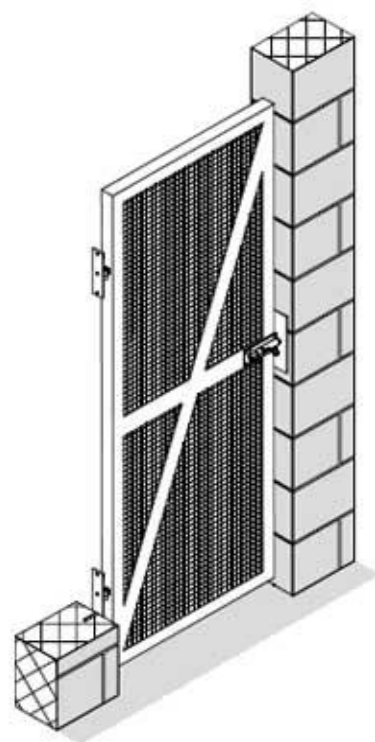
- Hot dip galvanised

### options

- Standard size 800mm wide x 1900mm high, but available in any reasonable size
- Can be provided with a lock instead of padbolt

# CS0803 - Kennel Gate

[CS803]

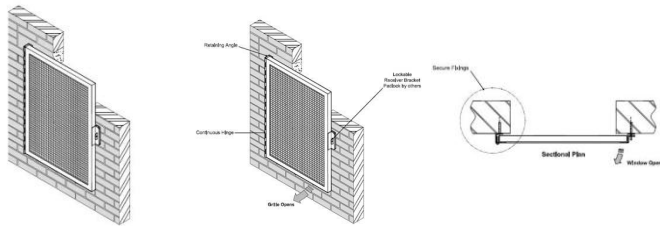




The Courtyard, Long Row, Newark, Notts NG24 1RW, ENGLAND  
Telephone: +44 (0) 1636 610030 Fax : +44(0) 1636 610022  
E-mail : [sales@gdmlindex.co.uk](mailto:sales@gdmlindex.co.uk) Website: [www.gdmlindex.co.uk](http://www.gdmlindex.co.uk)

## CS0804 - External Mesh Window Grille

[CS804]



A secure mesh grille used to prevent entry and vandalism to windows.  
Used for any application / location where needed. Used for Police Stations,  
Magistrates Court and Local Authorities.

### specification

- Constructed from 50 x 50 x 6 rolled steel angle frame infilled with 25 x 25 steel mesh with reinforcing bracing straps
- Gate is supplied as standard with one lockable padbolt, receiver angle and two pivot hinges
- Receiver angle and pivots are screw fixed to walls. • Padlock to be supplied by others

### finish

- Hot dip galvanised

### options

- Any size available
- Can be fixed instead of hinged

# CS0804 - External Mesh Window Grille

[CS804]

